



facebook.com/pakarabiantowers



www.pakarabiantowers.com



info@pakarabiantowers.com



**ALDOSARI & IBRAHIM**  
GLOBAL CONSTRUCTION (PVT) LTD

Head Office  
Plot No. 1809, Block-A  
Faisal Town, 44,000  
Islamabad-Pakistan  
Cell : +92-334-1111001,  
+92-331-5239996

Middle East Office  
Droub Aljazera Contracting Company Ltd  
4032 Abdul Malik Ibn Marwan Street,  
Almotamarat Disctricit, Riyadh 12711,  
Kingdom of Saudi Arabia  
+966 11 4653757

UK Office  
11 Sheridan Close  
Romford,  
RM3 7EX  
United Kingdom  
+44 748 380 7556



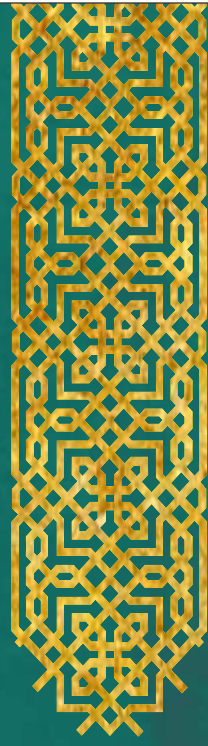
پاک عربیہ ٹاورز  
**PAK ARABIAN TOWERS**



## پاک عربیئر ٹاورز PAK ARABIAN TOWERS

Pak Arabian Towers is a project of "Aldosari & Ibrahim Global Construction (Pvt) Ltd." Located at Main Boulevard of Faisal Hills, Block-A, Islamabad. Its based on commercial & residential unit with attractive architecture & infrastructure. PAT offering shops, smart offices and Apartments.





## Chairman Message

We, Aldosari & Ibrahim Global Construction (Pvt) Ltd, focus our corporate ideals "To create a better environment for the nation," pursue our business activities with our core strengths of construction and engineering services, and strive to contribute by developing a safe and comfortable infrastructure and living environment and to prosper as a business enterprise continuously.

## President Message

"A great building must begin with the immeasurable, must go through measurable means when it is being designed, and in the end must be unmeasured." – Louis Kahn

## CEO Message

"Each of us is carving a stone, erecting a column, or cutting a piece of stained glass in the construction of something much bigger than ourselves." – Adrienne Clarkson



*Abdullah Saad M. Aldosari*

**Chairman**



*Ibrahim Shah*

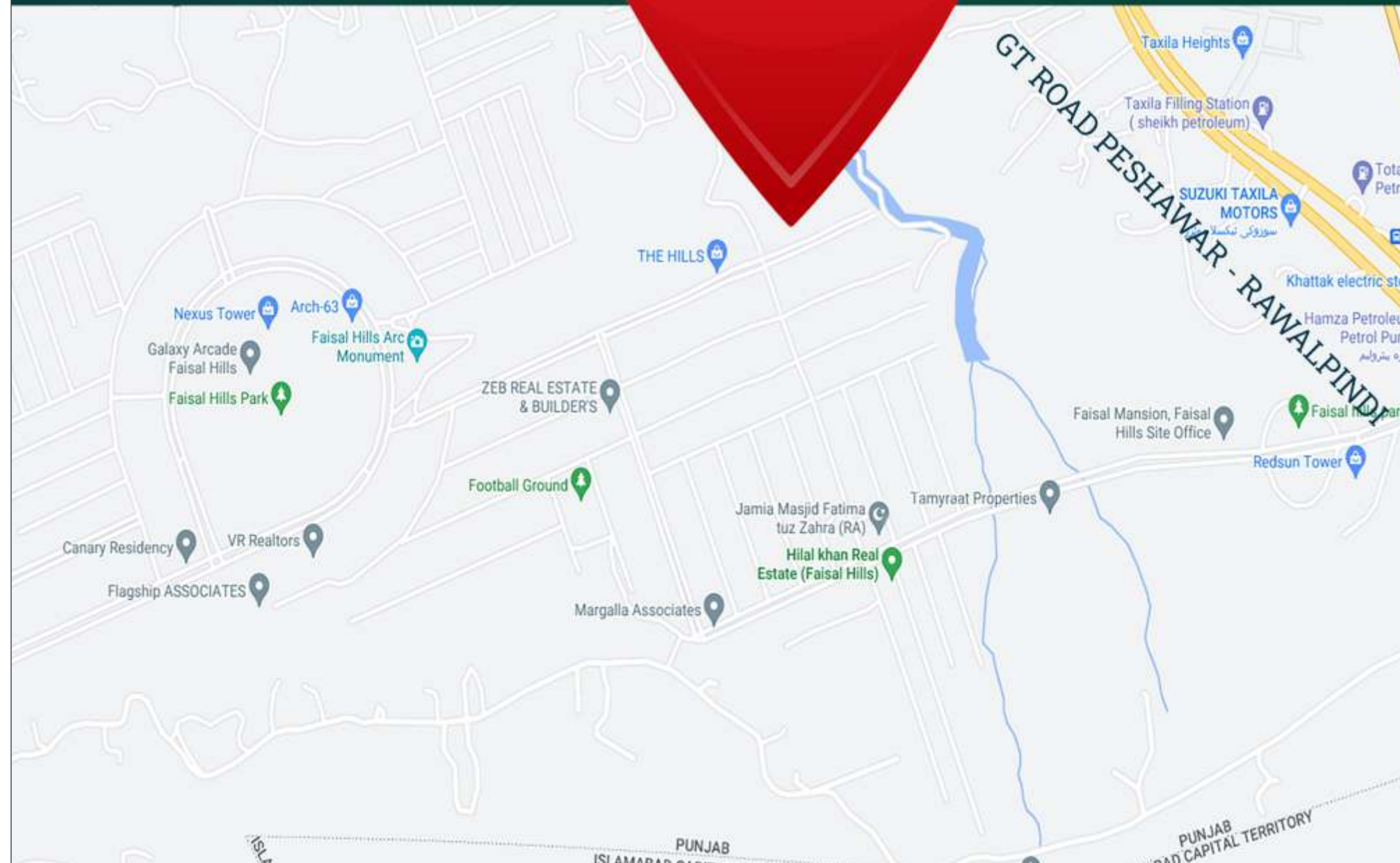
**President**



*Syed Adnan Shah*

**CEO**

# Location



# Meet Our Team



**Zeeshan Ali Shah**  
(Principal Architect)  
B.Arch ,M.PCATP



**Syed Jasim Ali**  
(Senior Architect)  
B. Arch



**Khurram Mehmood**  
MSc. Structure  
(Structure Engineer)



**Engr. Syed Noman Shah**  
BSc Electrical Engineering



**Syed Waqar Ali**  
(B.Tech Civil) Civil  
Site Supervisor

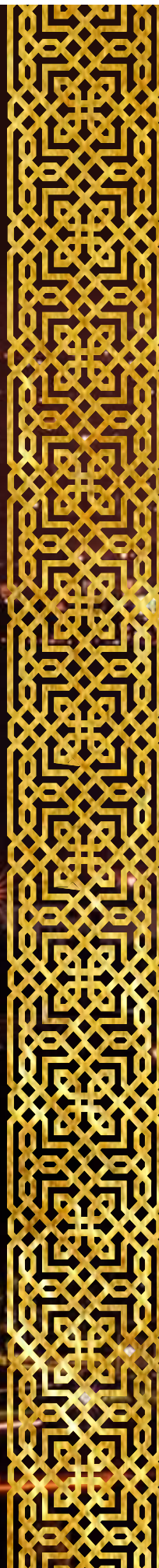


**Mohib Ullah Shinwari**  
Consultant Administration  
MBA Finance

# the Capital

Islamabad, the capital of Pakistan, is one of the most beautiful, green cities you will find in the country. Surrounded on one side by the lush green Margalla Hills, it gives a perfect blend of sightseeing and an urban lifestyle.

Being the capital, it is the most developed city in the country, and the most organized one. Areas are easy to access as the roads are well developed and mostly straight and at right angles to each other.





# project Features

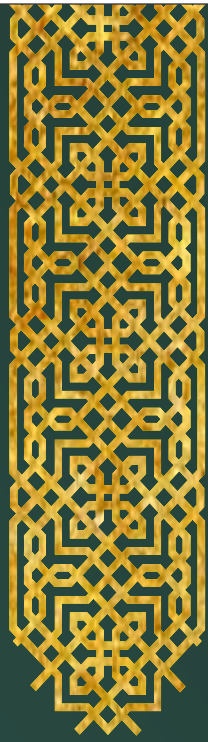
- Well Planned Layout
- Earthquake Resistant
- Elevators &uninterrupted Lift Facility
- Backup Generator
- 3 Sides Wide Car Parking Facility
- Fire Fighting Equipment
- Payers Area
- Lobby Area For Apartment
- 12mm Glass Door (First Floor, Ground Floor, And Basement Shops)
- Separate Elevator For Offices
- Smart Offices
- Air Conditioning
- Free Wi-fi And Tv Cable Connectivity
- Fire Prevention System And Sensors
- Separate Keycard Access Cargo Lift For Apartments
- Keycard Access To Apartments
- Panasonic Lobby Station System 24/7 Security
- Cctv Cameras On Each Floor
- Plastic Emulsion Paint For Interior Walls
- Premium Quality Finishing



Office - 1



Office - 2



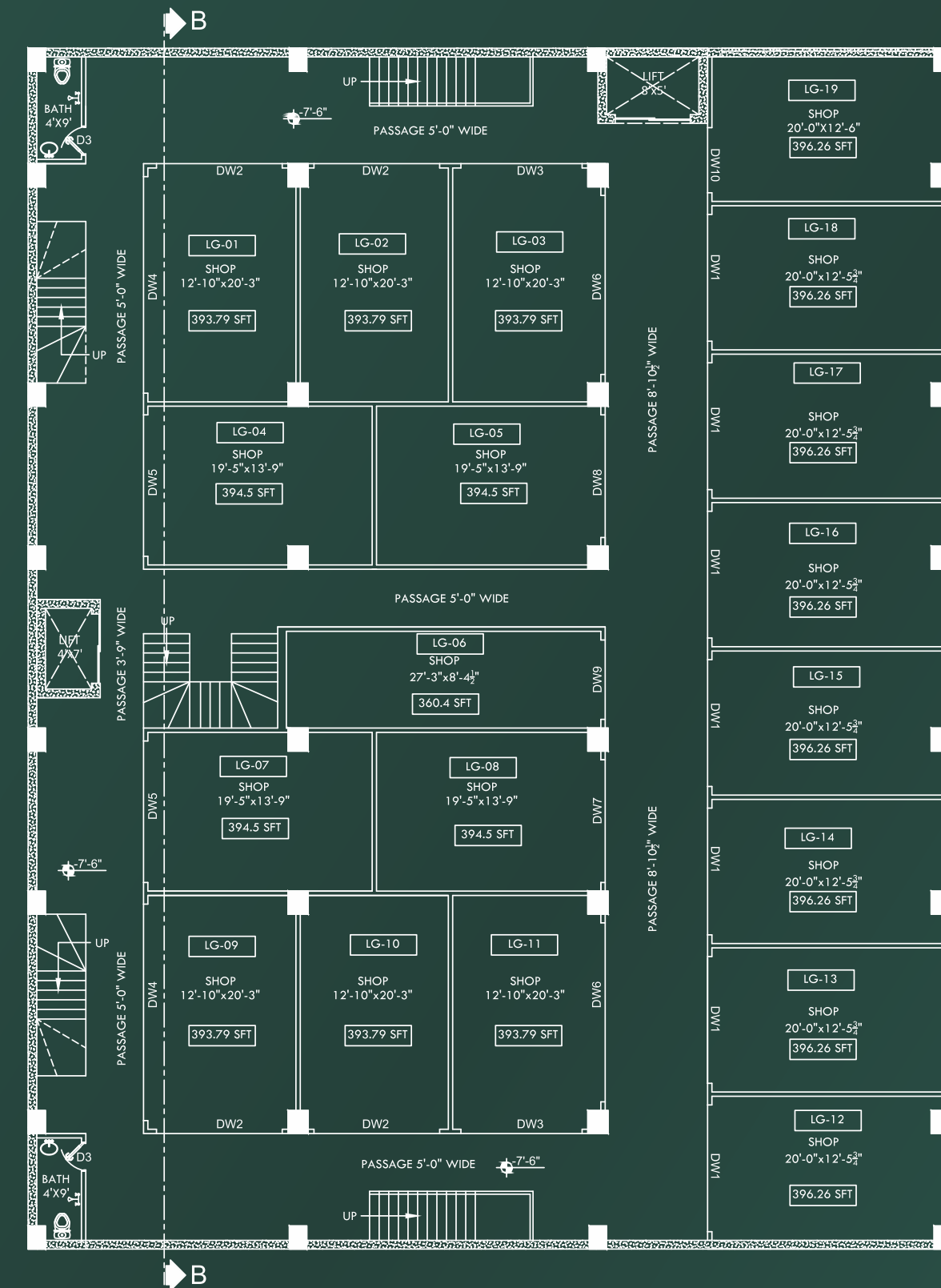
# 1 Bed Apartment



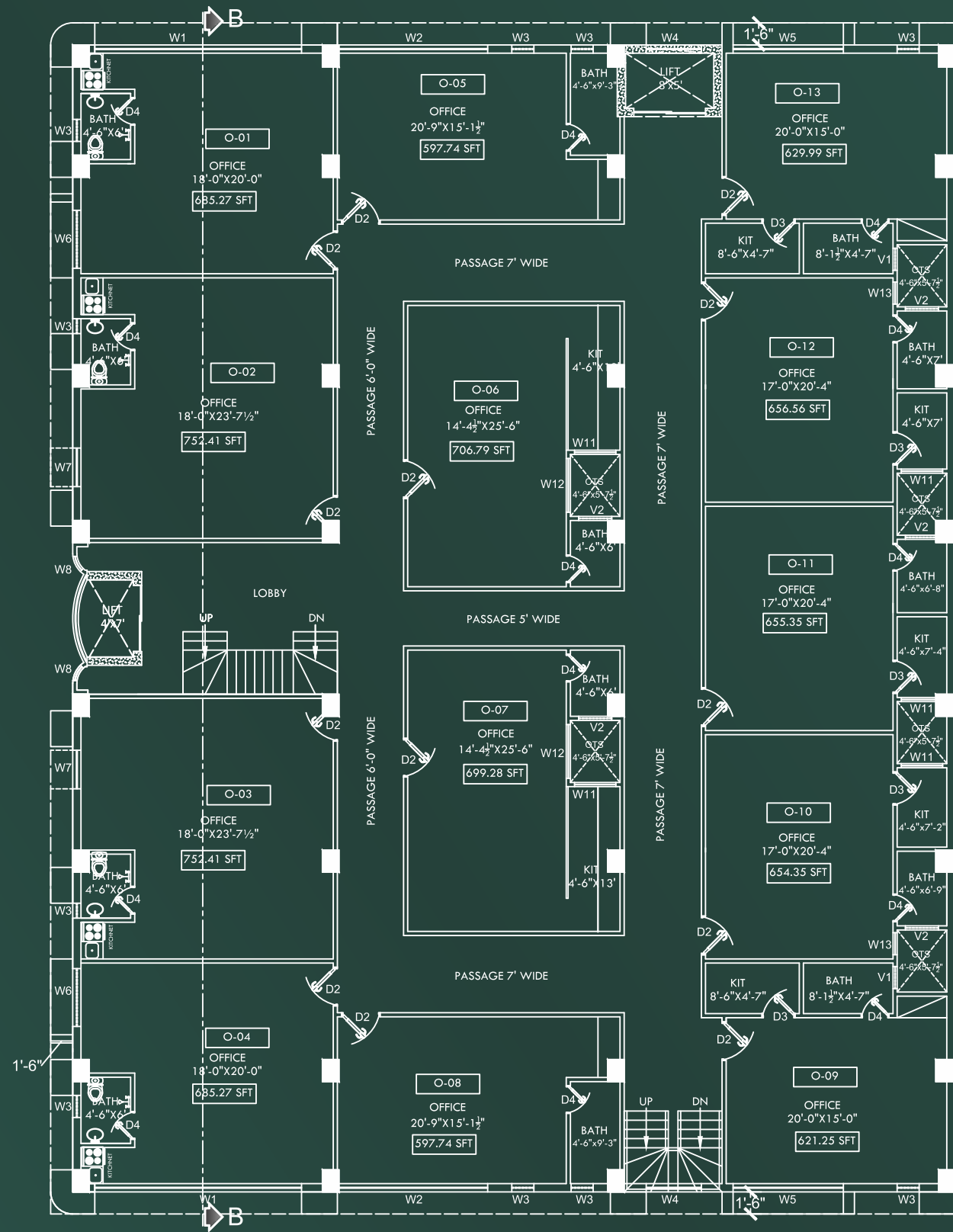
# 2 Beds Apartment

# SHOPS

## Lower Ground/ Ground & Mezzanine Floor

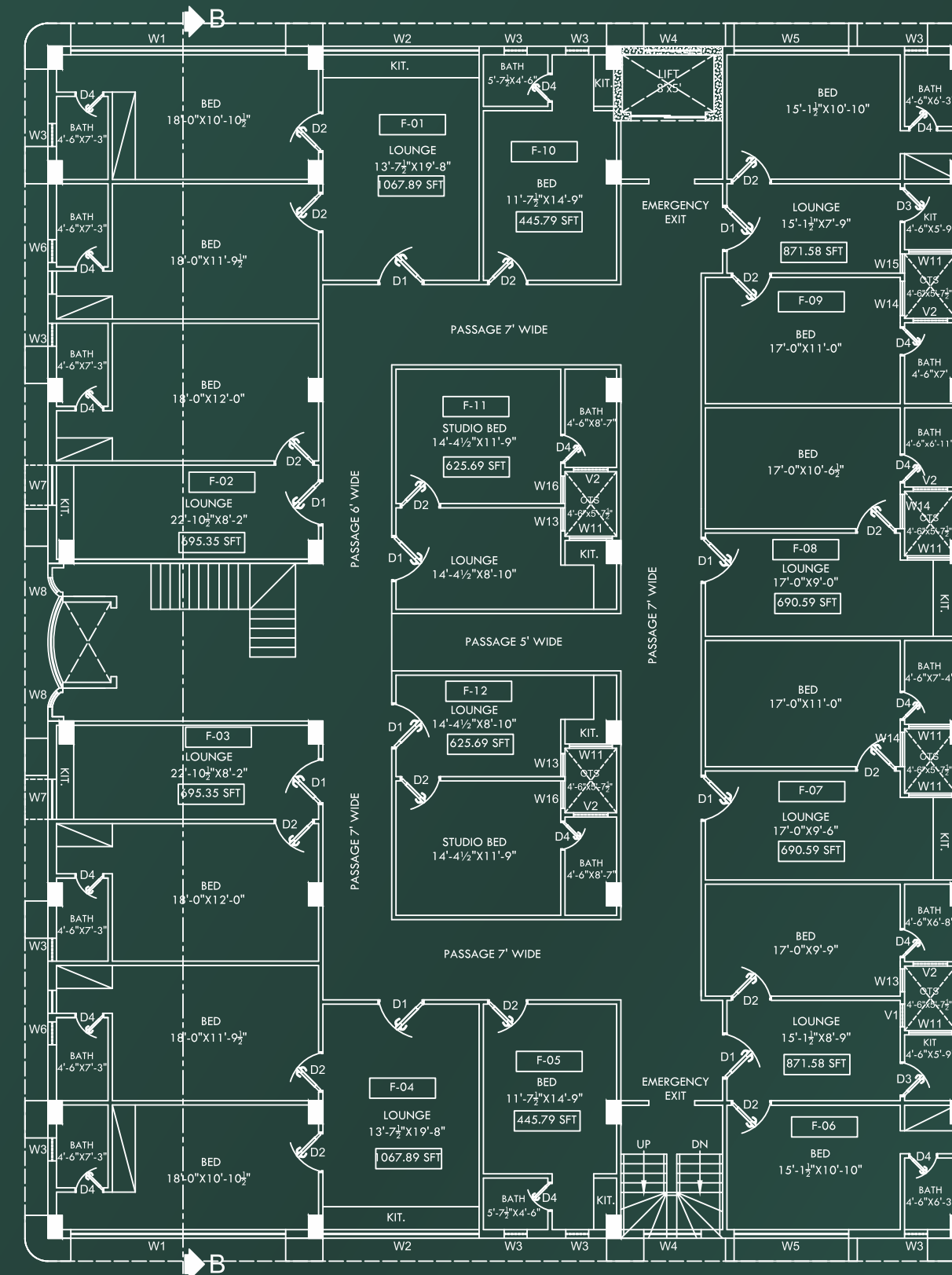


# OFFICE Second Floor



Floor Plan

# Apartment 3rd, 4th & 5th Floor



Floor Plan